

Application Note

ANSS023073001 –AP Mode – SeaSmart control panel

Chetco Digital Instruments, Inc

Revision 073023

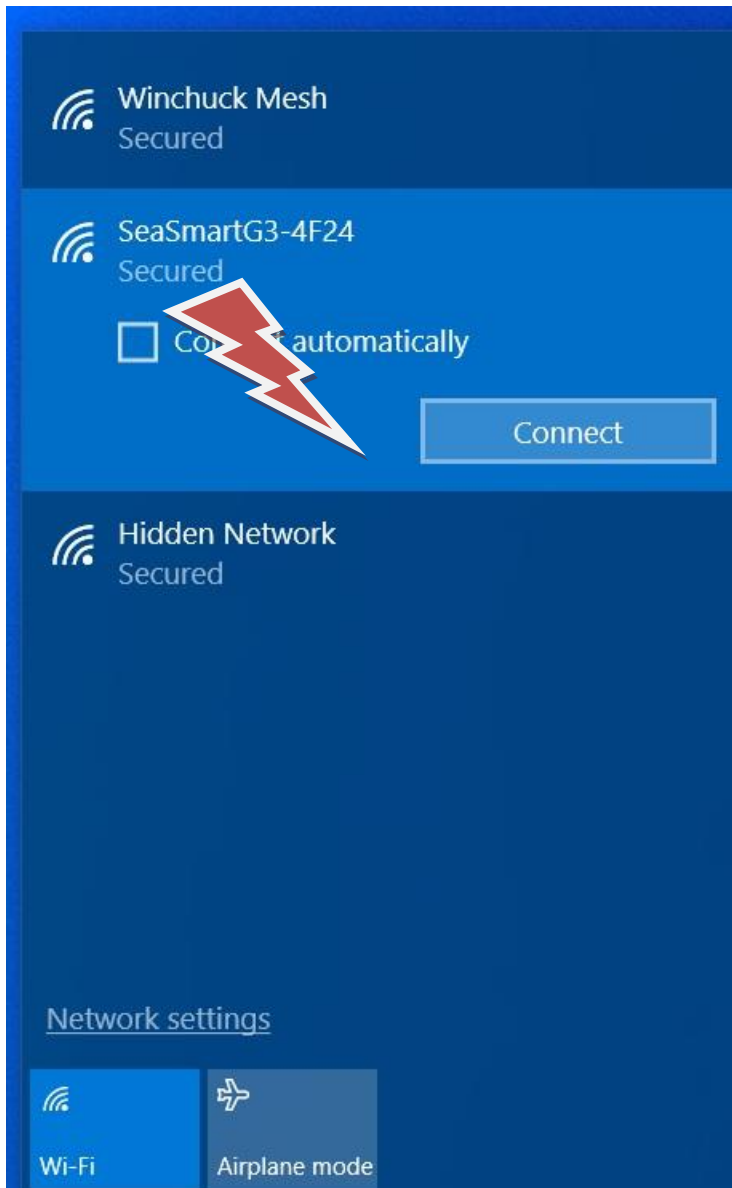
SeaSmart G3 Web Pages can be used to control gateway in standalone wireless AP mode.

The first step is to connect to the wireless controller in Access Point (AP) mode. AP mode does not require any local network or router and is a direct wireless connection between device and gateway

Go to your devices Wireless control panel and select the SeaSmartG3 access point



Select CONNECT to link gateway to device



If prompted for access point password, enter the default **seasmart** (lower case)



Winchuck Mesh
Secured

SeaSmartG3-4F24
Secured

Enter the network security key

seasmartg3

Next Cancel

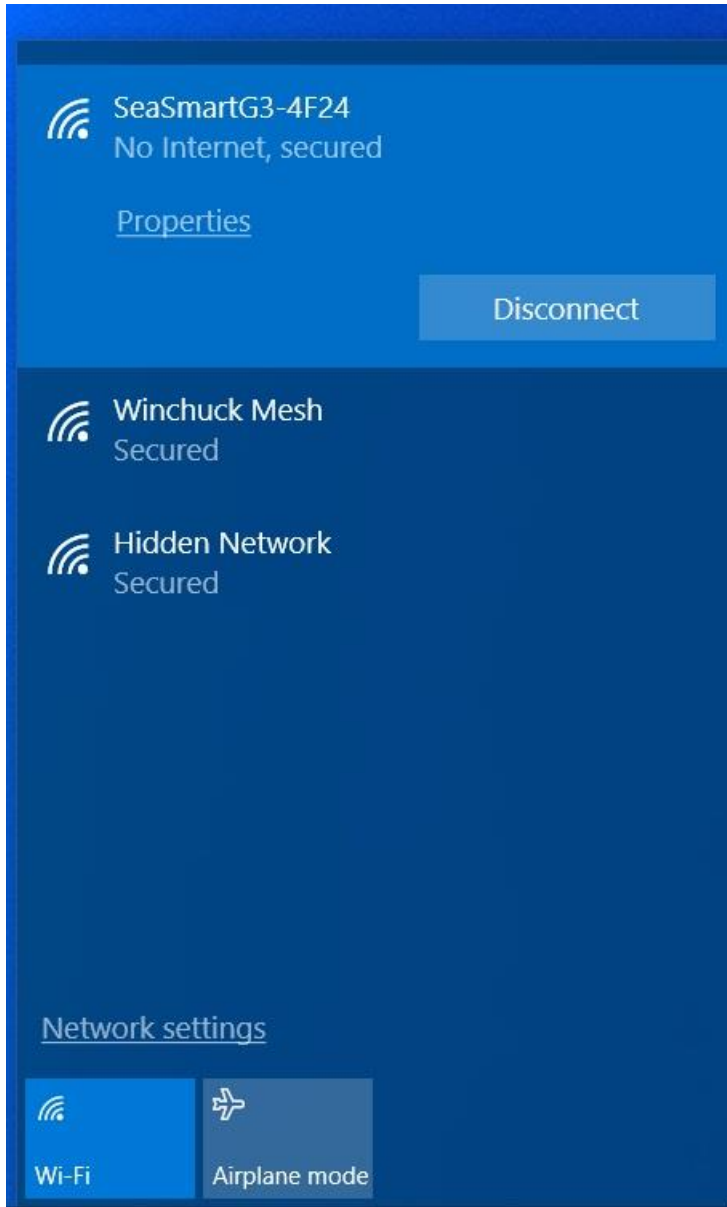
Hidden Network
Secured

Network settings

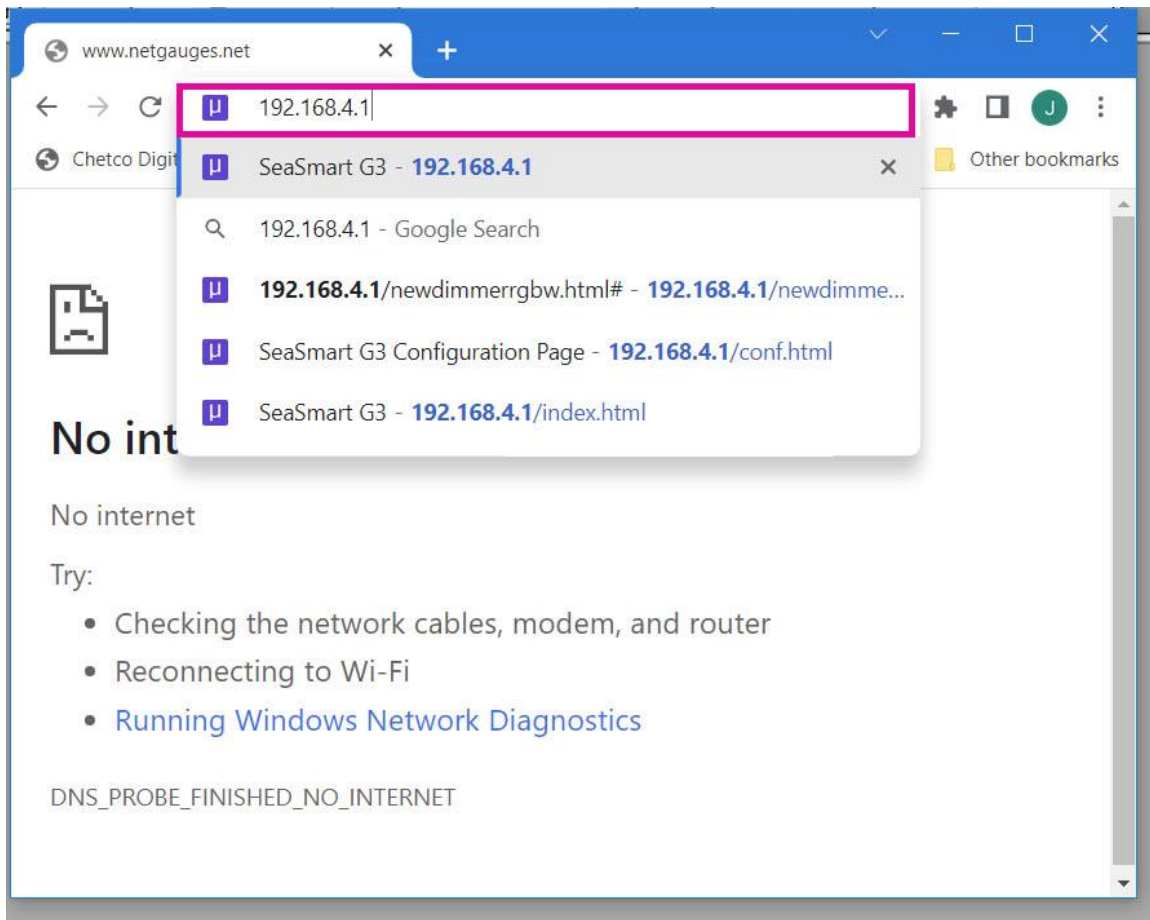
Wi-Fi Airplane mode

When connected directly to gateway in AP mode you will not have internet access.

To have both internet access and connection to light fixture you will need to set up Station Mode which is covered in a separate application note.



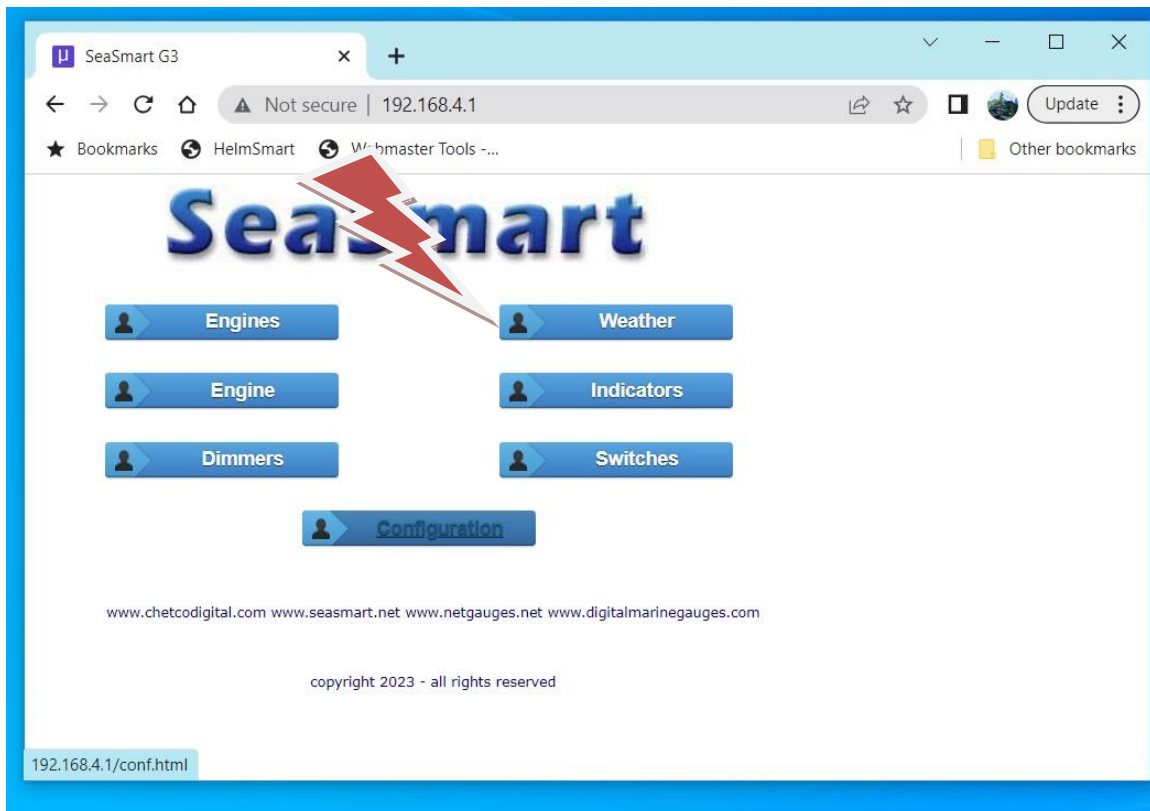
Once connected to device in AP mode, you can start up your local web browser and enter the default device IP address – <http://192.168.4.1>



The Web page will load and you will have access to several link buttons. The bottom CONFIGURATION button will take you device set up options such as joining a local infrastructure network (STATION MODE).

(covered in app note AN_SS230228_SeaSmartSTAmode.pdf)

For this simple example we can go directly to the gateway WeatherStation page



Live weather data can be viewed via the CAN bus interface(NMEA 2000) or via the direct NMEA 0183 port.

